

Port Macquarie Yacht Club Sailing Instructions

1 RULES

- 1.1 The race(s) will be governed by the rules as defined in *The Racing Rules of Sailing*.
- 1.2 The conditions stated in the Notice of Race, these Sailing Instructions and Event Schedule will apply.
- 1.3 Racing rules will be changed as follows, the following definitions apply;
 - *OOD (Officer Of the Day)* is responsible for Reporting at Start, Briefing, Starting races, recording event times and advising the protest committee of protests. The OOD represents the Race Committee.
 - *broadcast* is a transmission on VHF Channel 12. A broadcast may be acknowledged by a single competitor at the request of the OOD.
 - *hail* is a transmission on VHF Channel 12 between individual competitors and/or the OOD.
 - *mark* includes the definitions in the RRS and also a GPS Lat, Long provided in appendix A.
 - *event* is one or more races on a single day as noted in the PMYC Event Schedule.

Rule 26 Starting Races replaces Rule 26

Races shall start after a *broadcast* by the OOD giving a 10 second countdown to a warning signal. The warning signal will be 5 minutes before a race start. No other *broadcasts* are required. No visible or sound signals are used.

Yachts shall use the *broadcast* to synchronise at least one race timer used to start the race, sail the course and record elapsed time(s).

Rule 27 Other Race Committee Actions Before the start replaces Rule 27

Rule 27.1 No later than the warning signal, the course shall be *broadcast* by the OOD.

Rule 27.2 No mark shall be relocated after the warning signal.

Rule 27.3 Before the start the OOD may postpone the start through a *broadcast* and recommence the start procedure as per 26.

Rule 28 Sailing the course modifies Rule 28

Rule 28.1 and 28.2 shall apply.

Rule 28.3 GPS waypoints shall be used for some races replacing a physical mark as noted in Appendix A.

- Each yacht is required to record a GPS track using a time segmented recording method at a maximum interval of 2 seconds. This track shall be considered her official track for rule 28.2.
- GPS arrival notifications should not be used as turning marks.
- The GPS shall be set to use the WGS84 datum. GPS units not capable of using WGS84 shall not be used.

Rule 28.4 [Deleted]

Rule 28.5 Start and finish lines may be described as a transit in appendix A.

Rule 28.6 Yachts shall be required to record their elapsed race time from the start to when they have crossed the finish line. For segmented races, such as the long river *events*, each segment shall have a time recorded between the start and finish lines.

Rule 29.1 Individual Recalls is deleted

Rule 29.2 General Recall replaces Rule 29.2

When one or more yachts, at the start, has any part of her hull, crew or equipment, in the opinion of another competitor, on the course side of the starting line, the OOD may be advised by another yacht through a *hail*.

The yacht shall *hail* the OOD

- Nominating the yachts OCS by saying "OOD, OOD, [List Yachts] are OCS".
- The OOD shall *broadcast* "This is the OOD, General Recall, General Recall, all yachts return to the start area." and recommence the starting procedure as per 26.

Rule 32 Shortening or abandoning after the start replaces Rule 32

Rule 32.1 After the start the OOD may *broadcast* an alternate turning mark or number of laps to sail modifying the course provided at the briefing because of

- Foul weather.
- Insufficient wind or adverse tide makes it unlikely that less than 70% of the fleet will complete the course.
- Within 30 minutes of Sunset.
- any reason directly affecting the fairness or safety of the competition.
- to ensure that enough races are sailed for a regatta.

The OOD shall only shorten the course if competing yachts have not already passed beyond a new turning mark or yachts have been advised to record their lap times for the reduced number of laps.

Rule 32.2 If the OOD shortens the course they may do so by broadcast to competitors. The shortened course will be described as;

- a turning mark to replace a mark previously specified; and/or
- a last mark from which yachts shall sail to the finish line; and/or
- the number of laps or partial laps to be sailed; and/or
- a transit to be used as a finish line.

Rule 34 Mark Missing replaces Rule 34

If a mark is missing or is moving out of position laid, the OOD shall advise by broadcast a GPS waypoint that is to be used from Appendix A and/or an alternate course to be sailed.

2 REPORTING AT BRIEFING

- 2.1 Yachts intending to start shall respond to a *broadcast* by the OOD up to 5 minutes prior to the race briefing time noted in the PMYC Event Schedule.
- 2.2 Yachts shall advise the OOD their intention to race and number of persons on board.
- 2.3 All persons on board shall have been recorded as attending the race(s) on the PMYC web site prior to the race briefing.
- 2.4 If audible transmissions are not received by the OOD during the reporting at start, the yacht shall be recorded as an DNC.

3 BRIEFING

3.1 Yachts should be located within the following area during the briefing *broadcast* prior to the race briefing time noted in the PMYC Event Schedule;

- Short River, Inshore Regatta, Offshore and Twilight events, the briefing area shall be downstream of the Ferry Cables at Settlement Point Ferry and West of Longitude 152.913, approximately Pelican Point.
- Long River events shall be upstream of the Ferry Cables at Settlement Point and downstream of the Port Macquarie Sailing Club.

3.2 The OOD shall *broadcast* the current forecast for the Macquarie Coast from the Bureau of Meteorology inclusive of any warnings indicated.

3.3 The OOD shall describe the course to be sailed by indicating marks and/or courses from appendix A in these sailing instructions. This may be varied prior to the warning signal as per RRS 27.

4 CHANGES TO SAILING INSTRUCTIONS

4.1 Any change to the sailing instructions will be posted before 0900 on the day it will take effect, except that any change to the schedule of races will be posted by 2000 on the day before it will take effect.

5 SIGNALS MADE ASHORE

5.1 Changes made to the Sailing Instructions will be broadcast to competitors by email from a club official using the @pmyc.com.au domain and posted to the website <https://www.pmyc.com.au/racing/>

6 SCHEDULE OF RACES

6.1 Schedule of racing and time of the first warning signal shall be as per the latest version of the PMYC Events Schedule located at <https://www.pmyc.com.au/racing/>

7 RACING AREAS

7.1 Appendix A shows the location of racing areas.

8 THE COURSES

8.1 The diagrams and tables in Appendix A show the courses, the order in which marks are to be passed, and the side on which each mark is to be left.

9 MARKS

9.1 Marks, start and finish lines will be as per appendix A.

10 AREAS THAT ARE OBSTRUCTIONS

- 10.1** An area in the lower Hastings River bounded by a series of Yellow Marks known locally as “The Jet Ski Area”, is a restricted area. Yachts may not enter this area during racing and the boundary is to be considered a continuous obstruction. Yachts that enter this area must exit from the area at the same location that they entered the area and complete a one turn penalty.

11 THE START

- 11.1** Races will be started by using modified rule 26 in a location identified by Appendix A

12 CHANGE OF THE NEXT LEG OF THE COURSE

- 12.1** To change the next leg of the course, modify a turning mark or reduce the number of laps the OOD shall *broadcast* the changes.

13 THE FINISH

- 13.1** The finishing line will as per appendix A
- 13.2** Yachts shall record their finish time and race segments lap times if required. Times shall be provided to the OOD or submitted via email to handicapper@pmyc.com.au

14 TIME LIMITS AND TARGET TIMES

- 14.1** Boats failing to finish within 2 hours after the first boat sails the course and finishes will be scored Did Not Finish without a hearing. This rule may be modified in the NOR. This changes rules 35, A4 and A5.

15 DIVISION ONE

- 15.1** Division One boats shall record elapsed times for race segments as noted in Appendix A. The elapsed time for Division One boats shall be either calculated from multiple race segment times to be an equivalent distance and therefore time equivalent to Division Two or calculated from the ratio of the different course lengths to determine a known factor.
- 15.2** Boats shall not change divisions during the course of a series.

16 PROTESTS AND REQUESTS FOR REDRESS

- 16.1** Protests and requests for redress or reopening shall be received within 24 hours of the last finisher to the OOD.

17 SCORING

17.1 The scoring system is a low point scoring system as per A4 Scoring System.

17.2 5 races are required to be completed to constitute a series.

2 races are required to constitute a regatta.

17.3 When fewer than 5 races have been completed, a boat's series score will be the total of her race scores.

When 5 or more races have been completed, a boat's series score will be the total of her race scores excluding 20% of her worst scores.

18 SAFETY REGULATIONS

18.1 A boat that retires from a race shall notify the OOD as soon as possible.

18.2 The skipper shall ensure that all persons are members of the PMYC or affiliated Australian Sailing club and register for each event.

18.3 Each yacht shall have a current safety certificate issued for the category of racing nominated in the NoR and remain compliant whilst racing.

19 RUBBISH DISPOSAL

19.1 Boats shall not put rubbish in the water.

20 RADIO COMMUNICATION

20.1 A boat shall neither make radio transmissions while racing nor receive radio communications that is not available to all boats. This restriction also applies to mobile telephones and data services.

21 PRIZES

21.1 Prizes will be given at the discretion of the race committee.

22 DISCLAIMER OF LIABILITY

22.1 Competitors participate in the event entirely at their own risk. See RRS 4, Decision to Race. The PMYC will not accept any liability for material damage or personal injury or death sustained in conjunction with, prior to, during, or after an event, race, regatta, or series.

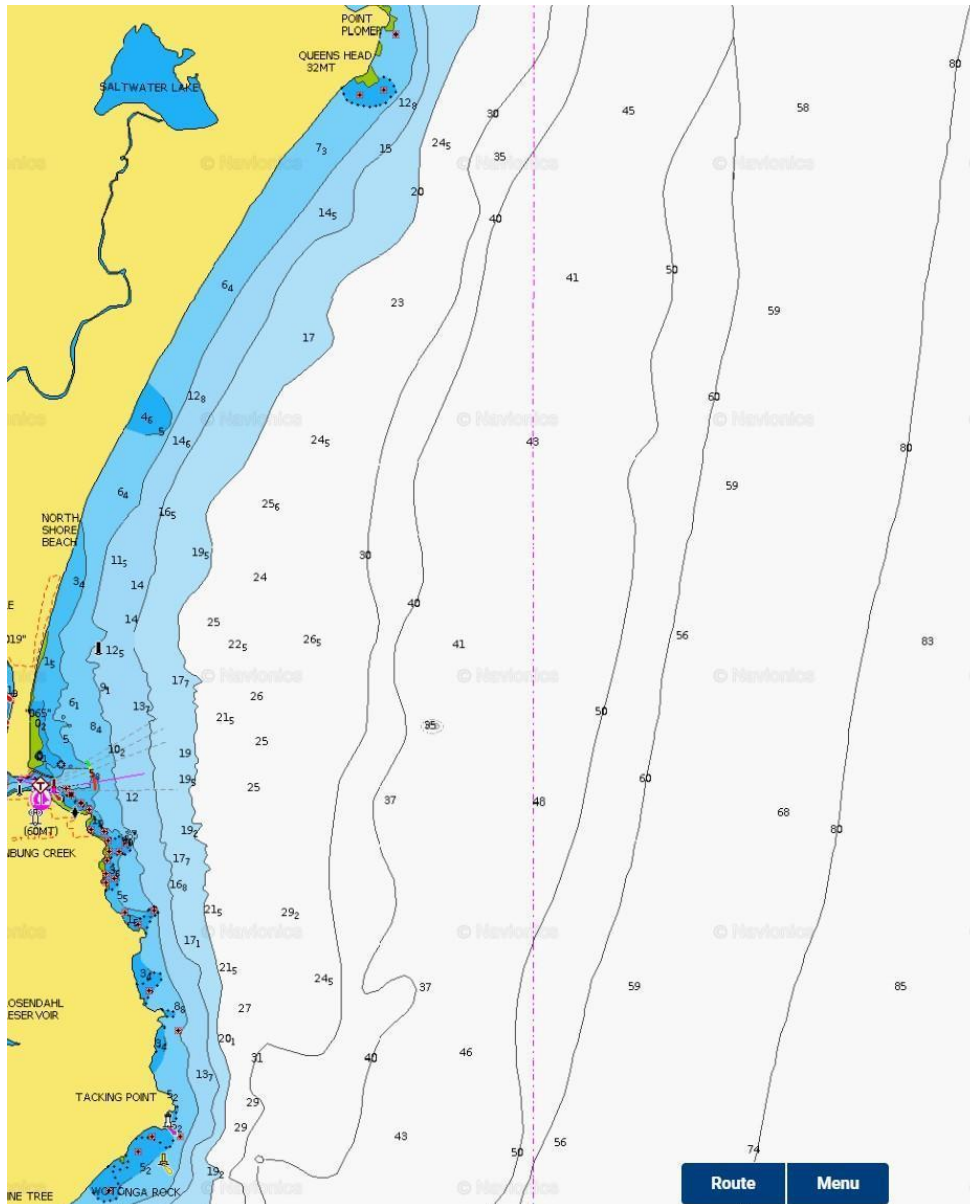
22.2 All participants shall review the risk warning and acknowledge the risk warning in their entry for a series or regatta. <https://www.pmyc.com.au/risk>

23 INSURANCE

23.1 Each participating boat shall be insured with valid third-party liability insurance, racing risk and with a minimum cover of \$10,000,000 per event or the equivalent.

Appendix A Courses and Marks

Race Area Ocean Buoy and Long Ocean



Offshore Marks

Offshore marks use the WGS84 Datum

Current version of the GPX file is 1.0.4 available at

<https://www.pmyc.com.au/racing/gps/>

ID	Name	Division	Lat S	Lon E
A0	Start	D1/D2	S 31 26.000	E 152 56.125
A1	Sth Start	D1/D2	S 31 26.100	E 152 56.170
BR	Bird Rock	D1/D2	S 31 25.975	E 152 55.890
B0	Short Beach	D1/D2	S 31 24.580	E 152 55.330
B1	Long-Nth Beach	D1	S 31 21.760	E 152 57.800
B2	Long-Nth Beach	D2	S 31 19.800	E 152 58.450
B3	Long-Tri Beach	D1	S 31 22.820	E 152 57.650
B4	Long-Tri Beach	D2	S 31 21.350	E 152 58.350
B7	Short Beach Alt	D1/D2	S 31 25.067	E 152 55.505
C0	Short Sea	D1/D2	S 31 24.640	E 152 56.620
C1	Long-Eas Ocean	D1	S 31 25.245	E 153 01.855
C2	Long-Eas Ocean	D2	S 31 24.900	E 153 04.500
C3	Long-Tri Ocean	D1	S 31 25.335	E 153 00.035
C4	Long-Tri Ocean	D2	S 31 25.025	E 153 01.855
C5	Long-NE Ocean	D1	S 31 22.800	E 152 59.700
C6	Long-NE Ocean	D2	S 31 21.375	E 153 01.340
C7	Short Sea Alt	D1/D2	S 31 25.156	E 152 56.660
J1	Long-Sth East	D1/D2	S 31 27.800	E 152 57.500
J2	Long-Sth South	D1/D2	S 31 28.500	E 152 56.800
J3	Long-Sth West	D1/D2	S 31 27.800	E 152 57.300
J4	Long-Sth Sausage	D1	S 31 26.440	E 152 56.500
L1	Laurieton S/F	D1/D2	S 31 38.040	E 152 50.900
OAR	Offshore Artificial Reef	D1/D2	S 31 25.044	E 152 58.950
TLS	Telstra Tower	D1/D2	S 31 25.886	E 152 54.862

Long Ocean Offshore Courses

Name	Div	Buoys
Long Ocean Triangle Starboard	D1	Start (BR-A0), B3s, C3s, A0s, Finish (BR Transit)
	D2	Start (BR-A0), B4s, C4s, A0s, Finish (BR Transit)
Long Ocean Triangle Port	D1	Start (A0-A1), C3p, B3p, Finish (BR Transit)
	D2	Start (A0-A1), C4p, B4p, Finish (BR Transit)
Long Ocean North	D1	Start (BR-A0), B1s, Finish (BR Transit)
	D2	Start (BR-A0), B2s, Finish (BR Transit)
Long Ocean North East	D1	Start (BR-A0), C5s, Finish (BR Transit)
	D2	Start (BR-A0), C6s, Finish (BR Transit)
Long Ocean East	D1	Start (BR-A0), C1s, Finish (BR Transit)
	D2	Start (BR-A0), C2s, Finish (BR Transit)
Long Ocean South	D1	Start (BR-A0), J1s, J2s, J3p, A0s, J4s, Finish (BR Transit)
	D2	Start (BR-A0), J1s, J2s, J3p, A0s, J1s, Finish (BR Transit)
Port to Laurieton	Both	Start (BR-A0), Finish (Crossing the leads and west of L1)
Laurieton to Port	Both	Start (West of L1 and south of the leads, Finish (BR Transit)

Start and Finish Line Transits

Bird Rock transit (BR Transit) is used to record finish times. The transit is where the Telstra tower (TLS) lines up with the highest, southern most peak on Bird Rock (BR), whilst yachts are west of A0.

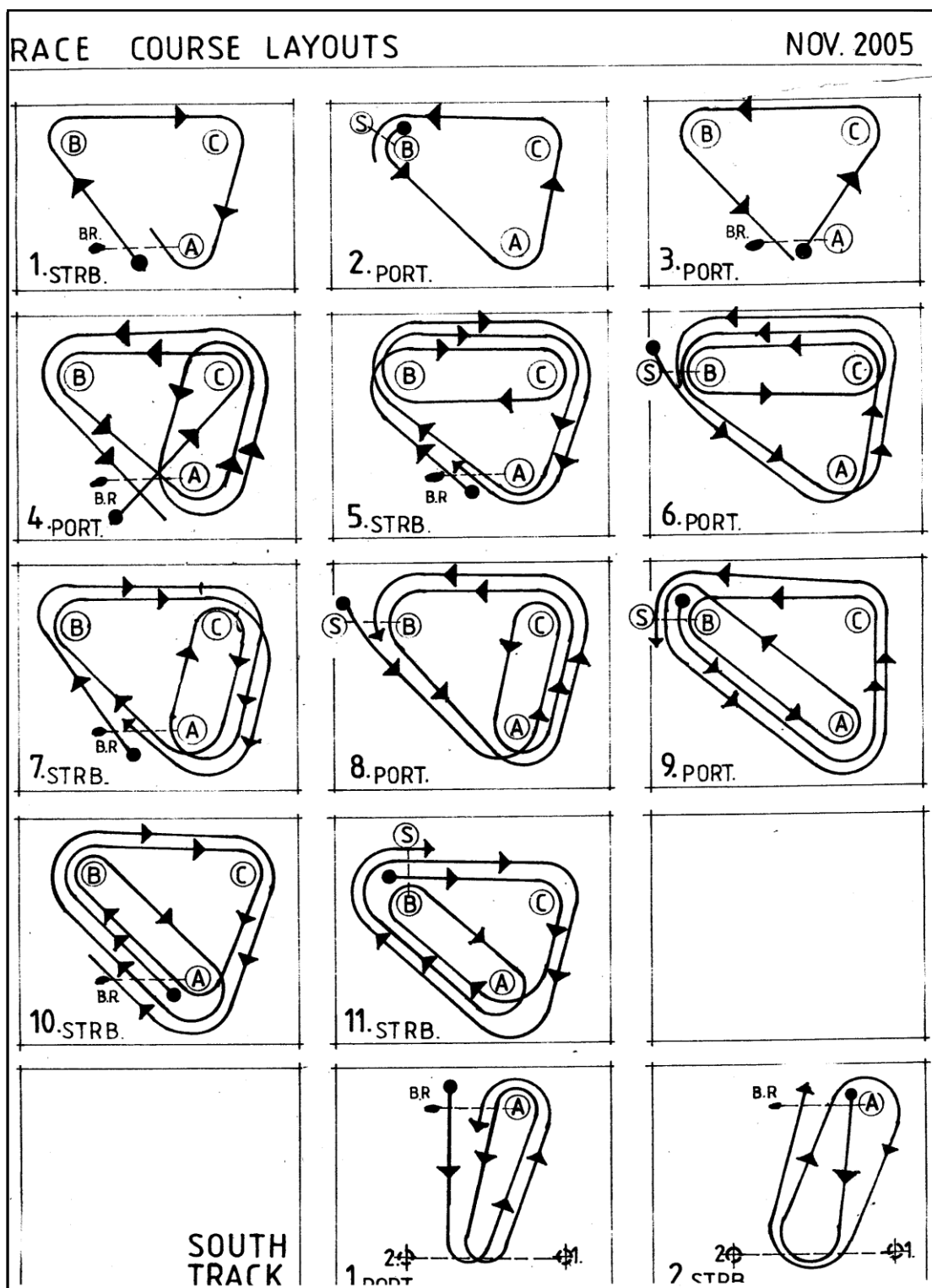


Laurieton Transit is the entry leads for the Camden Haven River. Yachts must be west of GPS waypoint L1.

Ocean Regatta Courses

Name	Buoys
Regatta NE	Start (BR-A0), C7s, Finish (BR-A0)
Regatta SE	Start (B0), C7s, Finish (B0)

Ocean Buoy Courses



Ocean Buoy courses use the marks designated as A0, B0 and C0 and are 1.57nm legs. These will be referred to by the OOD as **Ocean Buoy Course [X]**.

Alternate buoy locations for B7 and C7 may be used to shorten the course to 1nm legs. These will be referred to by the OOD as **Ocean Buoy Short Course [X]**.

An additional mark S may be laid adjacent to a mark to create a start and/or finish line indicated like (S-B) where the mark is adjacent to mark B.

Course	Div	Course to be Sailed
1	Both	Start (BR-A0), B, C, Finish (BR Transit)
2	Both	Start (S-B), A, C, B, Finish (S-B)
3	Both	Start (BR-A0), C, B, Finish (BR Transit)
4	D1	Start (BR-A0), C, B, A, C, A, C, B, Finish (BR Transit)
4	D2	Start (BR-A0), C, B, A, C, Finish (BR Transit)
5	D1	Start (BR-A0), B, C, B, C, A, B, C, A, Finish (BR Transit)
5	D2	Start (BR-A0), B, C, B, C, A, Finish (BR Transit)
6	D1	Start (S-B), A, C, B, C, B, A, C, B, Finish (S-B)
6	D2	Start (S-B), A, C, B, C, B, Finish (S-B)
7	D1	Start (BR-A0), B, C, A, C, A, C, B, A, Finish (BR Transit)
7	D2	Start (BR-A0), B, C, A, C, A, Finish (BR Transit)
8	D1	Start (S-B), A, C, A, C, B, A, C, B, Finish (S-B)
8	D2	Start (S-B), A, C, A, C, B, Finish (S-B)
9	D1	Start (S-B), A, C, B, A, B, A, C, B, Finish (S-B)
9	D2	Start (S-B), A, C, B, A, B, Finish (S-B)
10	D1	Start (BR-A0), B, C, A, B, A, B, C, A, Finish (BR Transit)
10	D2	Start (BR-A0), B, C, A, B, A, Finish (BR Transit)
11	D1	Start (S-B), C, A, B, A, B, C, A, B, Finish (S-B)
11	D2	Start (S-B), C, A, B, A, B, Finish (S-B)

River Course A



The Start and Finish line is between the red channel mark and a navigation sign on the eastern shore.

All courses start in a heading North (upstream)

Twilight Course

Start 1(A-Sign), B(p), C(p), D(p), B(s), A(s), E(s), Finish1 (A-Sign)

River A Course

Start 1(A-Sign), B(p), C(p), D(p), B(s), A(s), E(s), Finish1 (A-Sign)

River Regatta Course

Start 2(E-F), A(p), B(p), C(p), D(p), B(s), A(s), Finish2 (E-F)

Regatta course may have multiple laps replacing Start/Finish 2(E-F) with E(p)

The OOD will advise how many laps to be sailed.

River B Course



The River B course has 2 PMYC yellow inflatable buoys and a start line transit.

Mark A is NNW of Settlement Point and Mark B is upstream of The Anchorage but no further than the Ferry Cables.

The Start and Finish line is a transit extending east from the green channel mark when in line with the navigation sign on the western shore.

Course (Forward)

- S/F (heading North/Downstream)
- Mark A – Port
- Mark B – Port
- S/F (heading North/Downstream)

Course (Reverse)

- S/F (heading South/Upstream)
- Mark B – Port
- Mark A – Port
- S/F (heading South/Upstream)

OD will advise how many laps to be sailed.

River C Course (Long River)



The Long River is a three-leg race starting west of Settlement Point Ferry.

Leg 1 – Start/Finish Transit to the Hibbard East Transit leg finish.

Leg 2 – Start at Hibbard West Transit, port rounding on a channel mark nominated by the OOD either Mark A, B C or D, return to the Hibbard West Transit leg finish. Only one of A, B, C or D is considered a mark of the course.

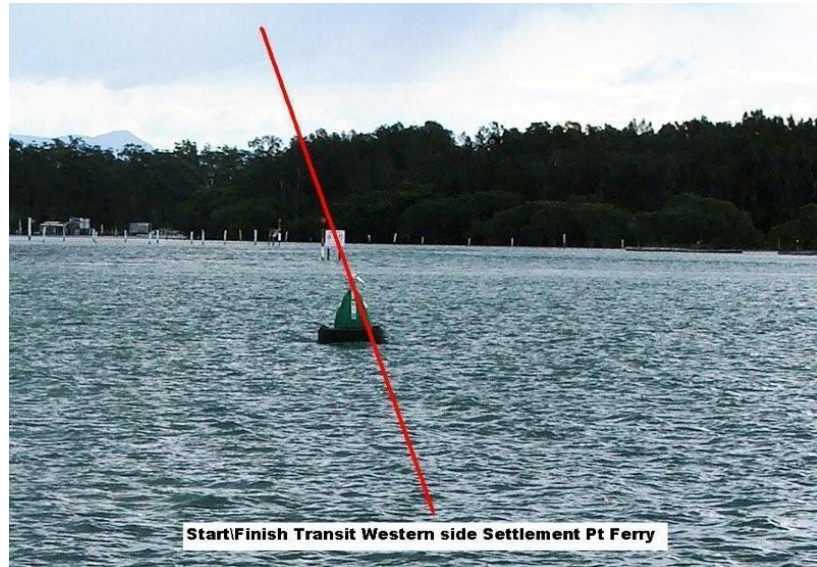
Leg 3 – Hibbard East Transit Start to the Start Finish Transit

Each yacht shall submit times for each leg.

River Transits

Start Finish

transit is East of the starboard channel marker and the sign marking the entrance to Limeburners creek



Hibbard East

transit is between two white poles on the northern shore that align with the edge of the 4-Knot ferry sign



Hibbard West

transit is between the yellow danger mark and the centre of the 4-knot ferry sign

